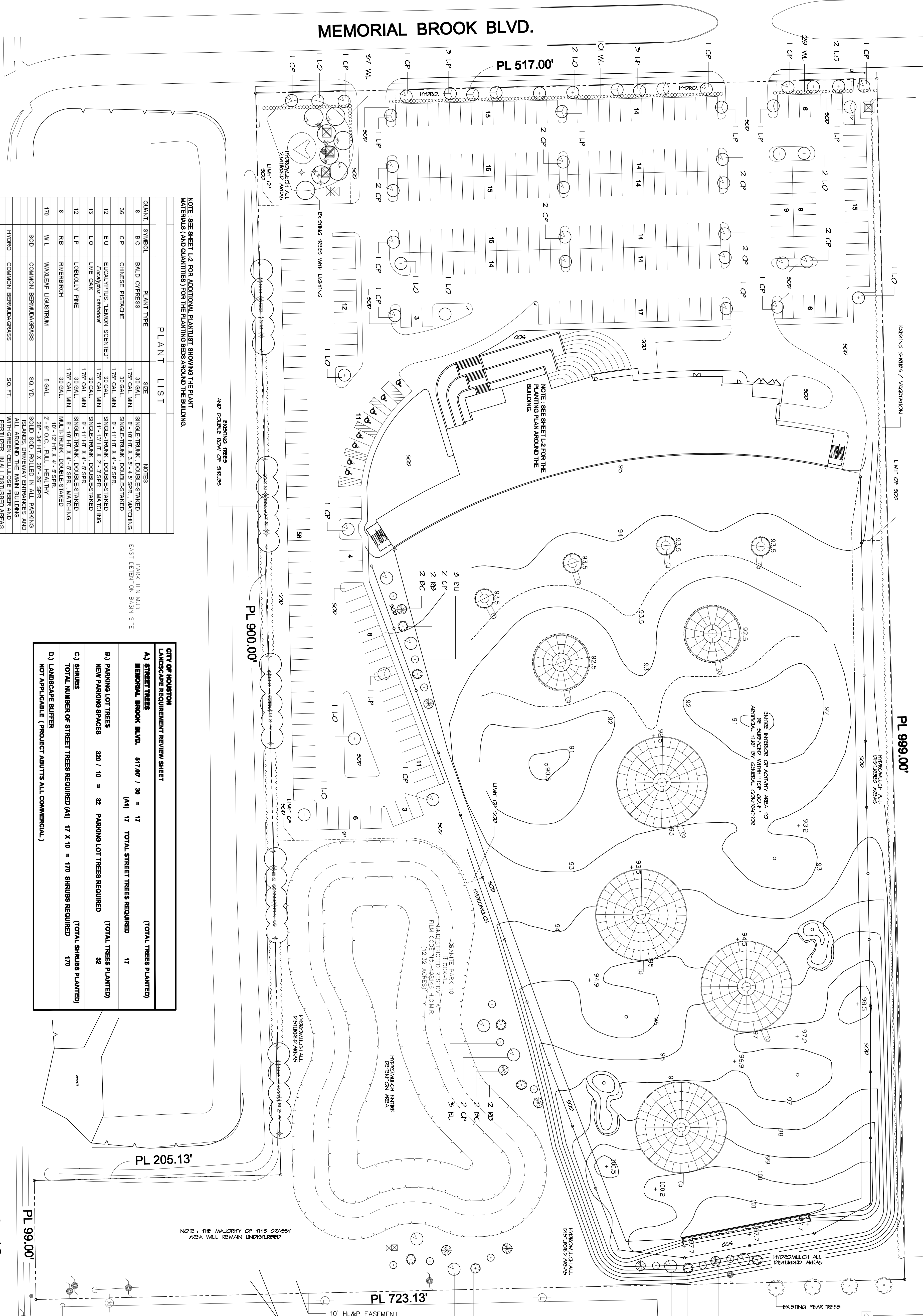


MEMORIAL BROOK BLVD.



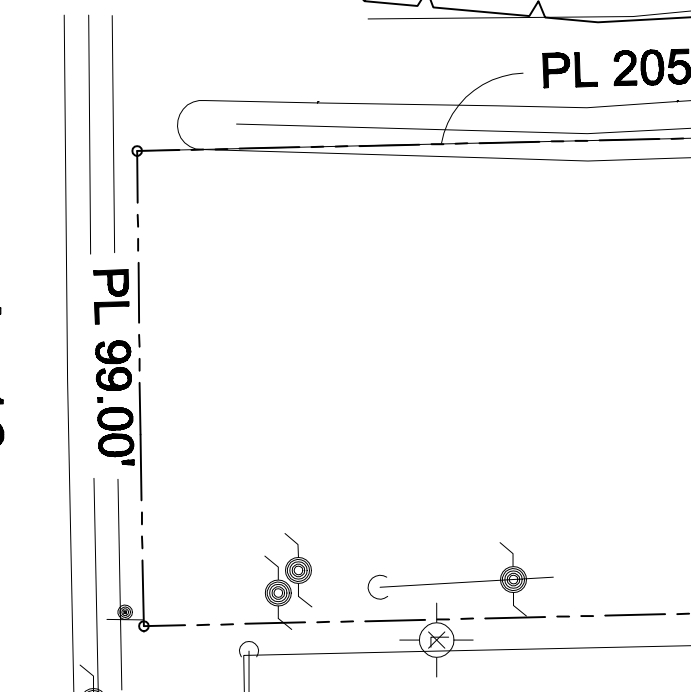
NOTE: SEE SHEET I-2 FOR ADDITIONAL PLANTING SHOWING THE PLANT MATERIALS (AND QUANTITIES) FOR THE PLANTING BEDS AROUND THE BUILDING.

QUANT.	SYMBOL	PLANT TYPE	SIZE	NOTES
8	BC	BALD CYPRESS	30 GAL.	SINGLE TRUNK, DOUBLE STAKED
36	CP	CHINESE PISTACHE	1 7/8" CAL. MIN.	8' FT. HT. X 3.5" DB. SPP. MATCHING
12	EU	EUCALYPTUS, LEMON SCENTED	30 GAL.	SINGLE TRUNK, DOUBLE STAKED
13	LO	LIVE OAK	1 7/8" CAL. MIN.	9' - 11' HT. X 4" - 5" SPP.
12	LP	LOBLOLLY PINE	1 7/8" CAL. MIN.	11' - 13' HT. X 2" - 3" SPP. MATCHING
8	RB	RIVERBIRCH	30 GAL.	SINGLE TRUNK, DOUBLE STAKED
170	WL	WAXLEAF LIGUSTRUM	30 GAL.	10' - 12' HT. X 4" - 5" SPP.
	SOD	COMMON BERBERIDGRASS	SO. TD.	2" - 9" OC. PULL, TREATING
	HYDR0	COMMON BERBERIDGRASS	SO. FT.	SOLID SOD ROLLED IN ALL PARKING ISLANDS, DRIVEWAY ENTRANCES AND ALL AROUND THE MAIN BUILDING WITH GREEN CELLULOSE FIBER AND FERTILIZER IN ALL DISTURBED AREAS AND ROAD SHOULDER AS NEEDED
88		TREES PROPOSED		
170		SHRUBS PROPOSED		

PLANT LIST

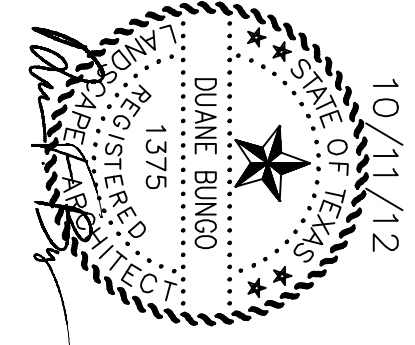
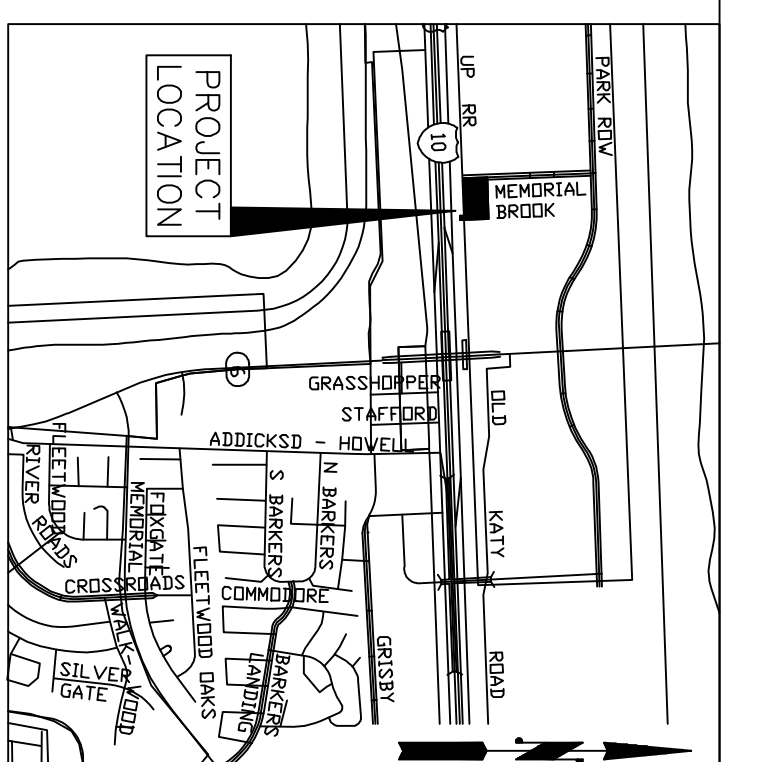
CITY OF HOUSTON
LANDSCAPE REQUIREMENT REVIEW SHEET

A) STREET TREES	517.00' / 30' = 17	(TOTAL TREES PLANTED)
MEMORIAL BROOK BLVD.	(A1) 17	TOTAL STREET TREES REQUIRED 17
B) PARKING LOT TREES	320 / 10 = 32	PARKING LOT TREES REQUIRED 32
C) SHRUBS	17 X 10 = 170	SHRUBS REQUIRED 170
D) LANDSCAPE BUFFER		NOT APPLICABLE (PROJECT ADJUTS ALL COMMERCIAL)



NOTE: THE MAJORITY OF THIS GRASSY AREA WILL REMAIN UNDISTURBED

10' HL&P EASEMENT W/ ADJACENT 10' AERIAL EASEMENT ON WEST SIDE



INTEGRATED LANDSCAPE ARCHITECTURE
THE NICHOLS OAKS DRIVE
HOUSTON, TEXAS 77008
PHONE: 713-272-9811
FAX: 713-272-9812
E-MAIL: landscape@terraassoc.com

#	CITY COMMENTS	DATE
# 3		10/11/12
# 2	PLANTERS REVISION	7/10/12
# 1	ADD OPTIONS	5/24/12

REVISION DATE APP.

TOP GOLF
LANDSCAPE PLAN
I-10 AT MEMORIAL BROOK

DRAWN BY: DFB	SCALE: 1" = 40'	CONTRACT: 1
CHECKED BY: DFB	DATE: OCT 11, 2012	PROJECT NO. 0030-1101
FILE NAME:		SHEET L-1 OF 5

TERRA ASSOCIATES
1445 N. LOOP WEST - SUITE 450
HOUSTON, TEXAS 77008
713-993-0333
TBPB Registration No.: F-0038332

I-10

I-10