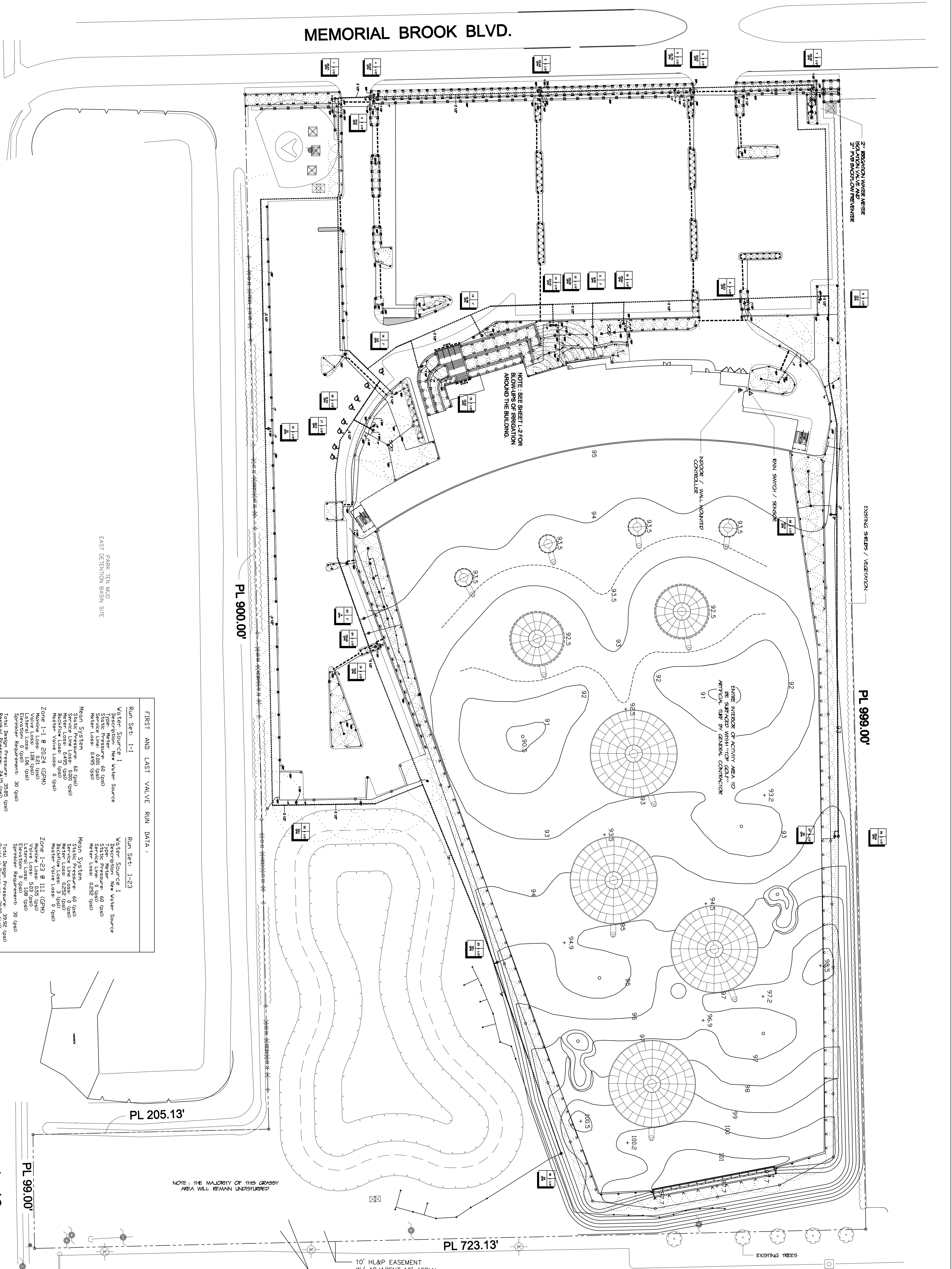


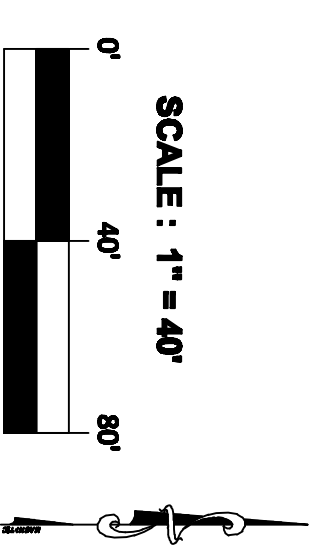
MEMORIAL BROOK BLVD.



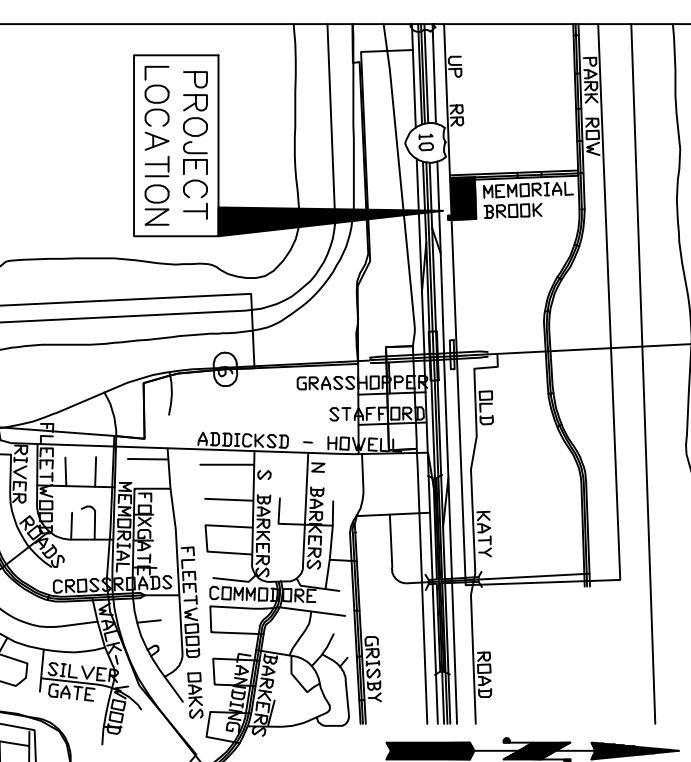
I-10

FIRST AND LAST VALVE RUN DATA:

Run Set	1-1	1-23
Water Source	New Water Source	New Water Source
Water Meter	60 GPM	60 GPM
Static Pressure	60 GPM	60 GPM
Valve Loss	0.495 GPM	0.495 GPM
Mean System	60 GPM	60 GPM
Static Pressure	60 GPM	60 GPM
Valve Loss	0.495 GPM	0.495 GPM
Backflow Loss	2.3 GPM	2.3 GPM
Machine Loss	0.81 GPM	0.81 GPM
Zone 1-1 @ 20.24 (GPM)		
Valve Loss	1.08 GPM	1.08 GPM
Elevation	0 GPM	0 GPM
Sprinkler Requirements	30 GPM	30 GPM
Total Design Pressure	35.855 GPM	35.932 GPM
Residual Pressure	24.13 GPM	20.08 GPM



I-10



IRRIGATION SCHEDULE

Symbol	Description	Part #	Flow	Material
▶	Flow Bird 02 - 1004	04	0.2	0
▶	Flow Bird 03 - 1004	05	0.3	0
▶	Flow Bird 04 - 1004	06	0.3	0
▶	Flow Bird 05 - 1004	07	0.3	0
▶	Flow Bird 06 - 1004	08	0.3	0
▶	Flow Bird 07 - 1004	09	0.3	0
▶	Flow Bird 08 - 1004	10	0.3	0
▶	Flow Bird 09 - 1004	11	0.3	0
▶	Flow Bird 10 - 1004	12	0.3	0
▶	Flow Bird 11 - 1004	13	0.3	0
▶	Flow Bird 12 - 1004	14	0.3	0
▶	Flow Bird 13 - 1004	15	0.3	0
▶	Flow Bird 14 - 1004	16	0.3	0
▶	Flow Bird 15 - 1004	17	0.3	0
▶	Flow Bird 16 - 1004	18	0.3	0
▶	Flow Bird 17 - 1004	19	0.3	0
▶	Flow Bird 18 - 1004	20	0.3	0
▶	Flow Bird 19 - 1004	21	0.3	0
▶	Flow Bird 20 - 1004	22	0.3	0
▶	Flow Bird 21 - 1004	23	0.3	0
▶	Flow Bird 22 - 1004	24	0.3	0
▶	Flow Bird 23 - 1004	25	0.3	0
▶	Flow Bird 24 - 1004	26	0.3	0
▶	Flow Bird 25 - 1004	27	0.3	0
▶	Flow Bird 26 - 1004	28	0.3	0
▶	Flow Bird 27 - 1004	29	0.3	0
▶	Flow Bird 28 - 1004	30	0.3	0
▶	Flow Bird 29 - 1004	31	0.3	0
▶	Flow Bird 30 - 1004	32	0.3	0
▶	Flow Bird 31 - 1004	33	0.3	0
▶	Flow Bird 32 - 1004	34	0.3	0
▶	Flow Bird 33 - 1004	35	0.3	0
▶	Flow Bird 34 - 1004	36	0.3	0
▶	Flow Bird 35 - 1004	37	0.3	0
▶	Flow Bird 36 - 1004	38	0.3	0
▶	Flow Bird 37 - 1004	39	0.3	0
▶	Flow Bird 38 - 1004	40	0.3	0
▶	Flow Bird 39 - 1004	41	0.3	0
▶	Flow Bird 40 - 1004	42	0.3	0
▶	Flow Bird 41 - 1004	43	0.3	0
▶	Flow Bird 42 - 1004	44	0.3	0
▶	Flow Bird 43 - 1004	45	0.3	0
▶	Flow Bird 44 - 1004	46	0.3	0
▶	Flow Bird 45 - 1004	47	0.3	0
▶	Flow Bird 46 - 1004	48	0.3	0
▶	Flow Bird 47 - 1004	49	0.3	0
▶	Flow Bird 48 - 1004	50	0.3	0
▶	Flow Bird 49 - 1004	51	0.3	0
▶	Flow Bird 50 - 1004	52	0.3	0
▶	Flow Bird 51 - 1004	53	0.3	0
▶	Flow Bird 52 - 1004	54	0.3	0
▶	Flow Bird 53 - 1004	55	0.3	0
▶	Flow Bird 54 - 1004	56	0.3	0
▶	Flow Bird 55 - 1004	57	0.3	0
▶	Flow Bird 56 - 1004	58	0.3	0
▶	Flow Bird 57 - 1004	59	0.3	0
▶	Flow Bird 58 - 1004	60	0.3	0
▶	Flow Bird 59 - 1004	61	0.3	0
▶	Flow Bird 60 - 1004	62	0.3	0
▶	Flow Bird 61 - 1004	63	0.3	0
▶	Flow Bird 62 - 1004	64	0.3	0
▶	Flow Bird 63 - 1004	65	0.3	0
▶	Flow Bird 64 - 1004	66	0.3	0
▶	Flow Bird 65 - 1004	67	0.3	0
▶	Flow Bird 66 - 1004	68	0.3	0
▶	Flow Bird 67 - 1004	69	0.3	0
▶	Flow Bird 68 - 1004	70	0.3	0
▶	Flow Bird 69 - 1004	71	0.3	0
▶	Flow Bird 70 - 1004	72	0.3	0
▶	Flow Bird 71 - 1004	73	0.3	0
▶	Flow Bird 72 - 1004	74	0.3	0
▶	Flow Bird 73 - 1004	75	0.3	0
▶	Flow Bird 74 - 1004	76	0.3	0
▶	Flow Bird 75 - 1004	77	0.3	0
▶	Flow Bird 76 - 1004	78	0.3	0
▶	Flow Bird 77 - 1004	79	0.3	0
▶	Flow Bird 78 - 1004	80	0.3	0
▶	Flow Bird 79 - 1004	81	0.3	0
▶	Flow Bird 80 - 1004	82	0.3	0
▶	Flow Bird 81 - 1004	83	0.3	0
▶	Flow Bird 82 - 1004	84	0.3	0
▶	Flow Bird 83 - 1004	85	0.3	0
▶	Flow Bird 84 - 1004	86	0.3	0
▶	Flow Bird 85 - 1004	87	0.3	0
▶	Flow Bird 86 - 1004	88	0.3	0
▶	Flow Bird 87 - 1004	89	0.3	0
▶	Flow Bird 88 - 1004	90	0.3	0
▶	Flow Bird 89 - 1004	91	0.3	0
▶	Flow Bird 90 - 1004	92	0.3	0
▶	Flow Bird 91 - 1004	93	0.3	0
▶	Flow Bird 92 - 1004	94	0.3	0
▶	Flow Bird 93 - 1004	95	0.3	0
▶	Flow Bird 94 - 1004	96	0.3	0
▶	Flow Bird 95 - 1004	97	0.3	0
▶	Flow Bird 96 - 1004	98	0.3	0
▶	Flow Bird 97 - 1004	99	0.3	0
▶	Flow Bird 98 - 1004	100	0.3	0
▶	Flow Bird 99 - 1004	101	0.3	0
▶	Flow Bird 100 - 1004	102	0.3	0

INTEGRATED LANDSCAPE ARCHITECTURE
 A PROFESSIONAL SERVICE PROVIDER
 DENTON, TEXAS 76205
 TEL: 817.424.8666
 FAX: 817.424.8667
 EMAIL: info@terraassoc.com

TERRA ASSOCIATES, INC.
 CONSULTING ENGINEERS
 1445 N. LOOP WEST - SUITE 450
 HOUSTON, TEXAS 77008
 713-993-0333
 TBPE Registration No.: F-0036332

DATE: OCT 11, 2012
 PROJECT No. 0030-1101
 SHEET L-3 OF 5

TOP GOLF
 IRRIGATION
 PLAN

10/10/12
 7/10/12
 5/24/12

10/11/12